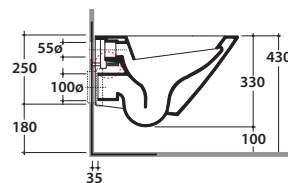
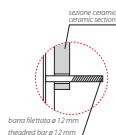
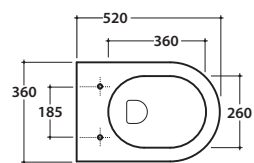
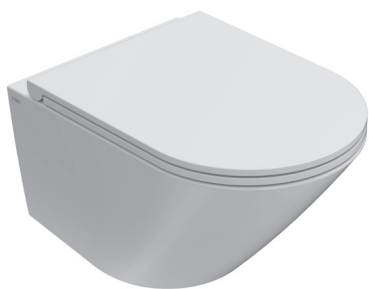


FORTY3 VASO SOSPESO FOS03.BI

CE EN 997:2015

GLOBO



Effetto antibatterico su ceramica
BATAFORM®
Ceramic antibacterial effect
BATAFORM®



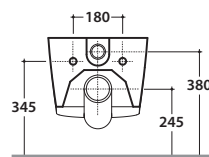
Scarico ottimizzato a 4,5/3 litri
Drain 4,5/3 lt



Prodotto smaltato con
CERASLIDE®
Glazed product with
CERASLIDE®

Cod. **FOS03.BI**

Vaso sospeso 52.36 h33 cm. Scarico 4,5 / 3 Lt. Completo di fissaggi. Peso 18 Kg
Wall-hung Wc 52.36 h33 cm. Drain 4,5/3 Lt. Fixing kit included. Weight 18 Kg



Copriwater con sistema di
cerniere a sgancio rapido
Seat-cover with hinge system
to quick release



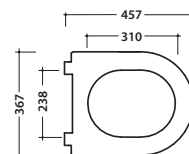
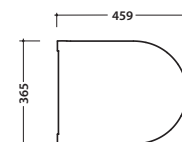
Trattamento antibatterico per sedili in
versione bianco lucido
Antibacterial treatment on toilet seats
in shiny white

Cod. **FOR19BI**

Coprivaso rimovibile in duroplast con chiusura tradizionale. Peso 3,5 Kg
Removable duroplast seat-cover with traditional closing system. Weight 3,5 Kg

Cod. **FOR20BI**

Coprivaso rimovibile in duroplast con chiusura rallentata. Peso 3,5 Kg
Removable duroplast seat-cover with soft-closing system. Weight 3,5 Kg



Cod. **VA132**

Riduttore flusso di scarico.
Flow reductor.



Cod. **PU001**

Protezione antiurto e acustica.
Acoustic and crash protection.



Cod. **FI002**

Staffa di fissaggio a "L". Peso 2,5 Kg
Fixing brackets for W/H sanitary. Weight 2,5 Kg